

Technical Data Sheet

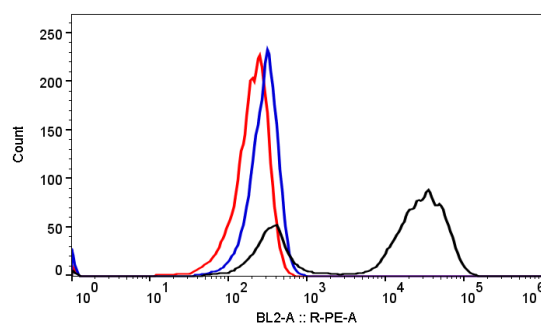
Rabbit IgG Isotype Control, PE

Product Information

Material Number:	700306
Size:	100 tests
Vol. per Test	1 μ L
Antibody Types	Monoclonal
Clone:	6B2
Immunogen:	KLH
Host:	Rabbit
Isotype:	IgG
Storage Buffer:	Aqueous buffered solution containing protein stabilizer and \leq 0.03% sodium azide.

Background

Isotype controls are negative controls that are designed to measure the amount of non-specific background signal caused by the primary antibody. Isotype controls have no specificity for the target protein, yet retain all of the non-specific characteristics of an antibody.



Flow cytometric analysis of anti-CD19 CAR expression on Jurkat cells. Jurkat cells were lentivirally transduced with anti-CD19 CAR and cultured for 7 days. 2×10^5 cells were stained with Rabbit Anti-Mouse FMC63 scFv Monoclonal antibody, PE (Cat. No. 200106) (black) compared to Rabbit IgG Isotype Control, PE (Cat. No. 700306) (blue), or unstained (red). Acquisition of $>10,000$ events was performed.

Preparation and Storage

Store undiluted at 2-8 $^{\circ}$ C and protected from prolonged exposure to light. Do not freeze.
The polyclonal antibody was purified by Protein A.
The antibody was conjugated with R-PE under optimum conditions.

Application Notes

Application

Flow cytometry

Routinely Tested

Product Notices

1. Negative control for use in conjunction with BioSwan Laboratories antibodies. This isotype control has been derivatized with a quantity of fluorochrome that matched the F/P (fluorochrome/protein) ratio of BioSwan Laboratories monoclonal reagents. The recommended concentration is 1 μ L/test.
2. Caution: Sodium azide yields highly toxic hydrazoic acid under acidic conditions. Dilute azide compounds in running water before discarding to avoid accumulation of potentially explosive deposits in plumbing.