

## Technical Data Sheet

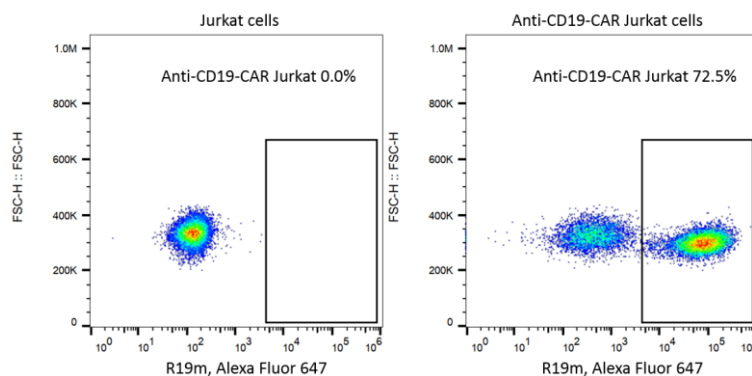
### Rabbit Anti-Mouse FMC63 scFv Monoclonal Antibody

#### Product Information

Material Number:	200100
Size:	100 Tests
Vol. per Test:	1 $\mu$ L
Antibody Types:	Monoclonal
Clone:	R19M
Immunogen:	scFv region of a CD19-specific mouse mAb clone FMC63
Host Species:	Rabbit
Reactivity:	Mouse
Storage Buffer:	Aqueous buffered solution containing protein stabilizer and $\leq 0.05\%$ ProClin 300.

#### Description

The rabbit monoclonal antibody R19M specifically binds to the scFv region of a CD19-specific mouse monoclonal antibody (mAb, clone FMC63). CD19 antigen is a B-cell specific cell surface antigen, which is expressed in all B-cell lineage malignancies and normal B-cells. The scFv region of FMC63 has been used to develop CD19-specific chimeric antigen receptor (CAR) T cells utilized in clinical trials.



*Flow cytometric analysis of anti-CD19 CAR expression on human cell line Jurkat cells. Jurkat cells were transduced with lentivirus encoding anti-CD19 CAR and cultured.  $2 \times 10^5$  cells were stained for the expression of anti-CD19 CAR with Rabbit Anti-Mouse FMC63 scFv Monoclonal Antibody (Cat. No. 200100, right panel). Secondary staining was carried out with AffiniPure F(ab')<sub>2</sub> Fragment Goat anti-Rabbit IgG(H+L), Alexa Fluor 647 (Cat. No. 700002). Non-transduced Jurkat cells were used as a control for gating of CAR expression (left panel).*

#### Preparation and Storage

Store undiluted at 2-8°C. Do not freeze.

The monoclonal antibody was purified by Protein A.

#### Application Notes

Application

Flow cytometry

Routinely Tested

#### Product Notices

- Since applications vary, each investigator should titrate the reagent to obtain optimal results.
- Caution: Antibody solutions containing ProClin 300 should be handled with care. Do not take internally and avoid all contact with the skin, mucosa and eyes.
- Conditions: The information disclosed herein is not to be construed as a recommendation to use the above product in violation of any patents. BioSwan will not be held responsible for patent infringement or other violations that may occur with the use of our products. Purchase does not include or carry any right to resell or transfer this product either as a stand-alone product or as a component of another product. Any use of this product other than the permitted use without the express written authorization of BioSwan Company is strictly prohibited. For Research Use Only. Not for use in diagnostic or therapeutic procedures. Not for resales.

---

BioSwan, the BioSwan Logo and all other trademarks are property of BioSwan Laboratories, Co., Ltd..