

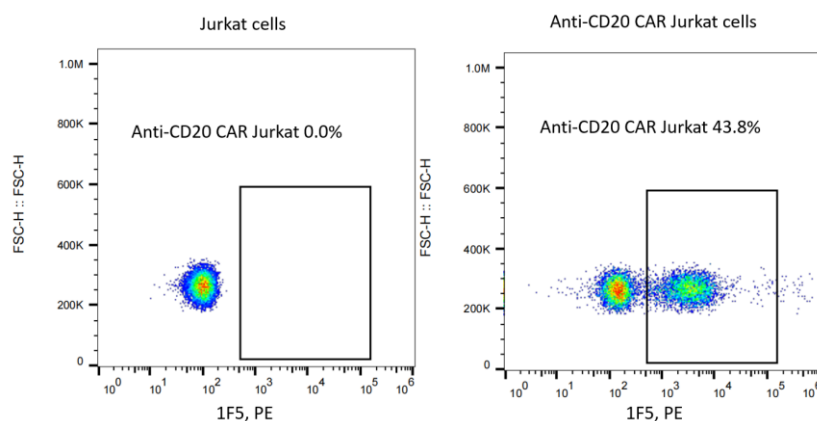
Technical Data Sheet

Rabbit Anti-Human 2C6 scFv Monoclonal Antibody, PE

Product Information	
Product No.	202405
Size	25 Tests
Recommended Vol. per Test	1 μ L
Antibody Types	Monoclonal
Antibody Format	Whole IgG
Clone	1F5
Immunogen	scFv region of a CD20-specific Human mAb clone 2C6
Conjugate	PE
Excitation/Emission Max	488/578nm, 561/578nm
Host Species	Rabbit
Reactivity	Human
Storage Buffer	Aqueous buffered solution containing protein stabilizer and $\leq 0.05\%$ ProClin 300
Storage conditions	2-8°C, store in dark

Description

The rabbit monoclonal antibody 1F5 specifically binds to the scFv region of a CD20-specific human monoclonal antibody (mAb, clone 2C6). CD20 (cluster of differentiate 20) is a protein that is expressed on the surface of B cells, starting at the pre-B cell stage and also on mature B cells in the bone marrow and in the periphery. CD20 is not expressed on hematopoietic stem cells, pro-B cells, or normal plasma cells. The scFv region of 2C6 has been used to develop CD20-specific chimeric antigen receptor (CAR) T cells utilized in clinical trials.



Flow cytometric analysis of anti-CD20 CAR expression on human cell line Jurkat cells. Jurkat cells were transduced with lentivirus encoding anti-CD20 CAR and cultured. 2×10^5 cells were stained for the expression of anti-CD20 CAR with Rabbit Anti-Human 2C6 scFv Monoclonal Antibody, PE (Product No. 202405, right panel). Non-transduced Jurkat cells were used as a control for gating of CAR expression (left panel).

Preparation & Storage

- Store undiluted at 2-8°C.
- Avoid prolonged exposure to light.
- The monoclonal antibody was purified by Protein A.
- The antibody was conjugated with PE under optimum conditions, and unincorporated dye was removed.

Application Notes

Application

Flow cytometry

Routinely Tested

Recommended Antibodies to Include in the Detection Process

Product name	Product No.
Anti-human CD45 Antibody	602148
Anti-human CD14 Antibody	602240
Anti-human CD8 Antibody	602044
Anti-human CD3 Antibody	603943/604043
Anti-human CD4 Antibody	604344

FACS Protocol

- BioSwan reagents can be used with or without an isotype control to assess the amount of nonspecific antibody binding.

(Optional) For Whole Blood Sample

1. Pipette 1 μ L Rabbit Anti-Human 2C6 scFv Monoclonal Antibody, PE into the bottom of the tube.
2. Add dead cell staining solution and additional fluorochrome conjugated antibodies into the bottom of the tube.
3. Pipette 100 μ L of well-mixed, anticoagulated whole blood into the bottom of the tube. Mix gently and thoroughly.
Note Avoid smearing sample down the side of the tube. If the sample remains on the side of the tube, it will not be stained with the reagents.
4. Incubate for 25 minutes in the dark at room temperature (18-25°C).
5. Pipette Red Blood Cell Lysis Solution to the tube. Mix gently and thoroughly. Incubate for 15 minutes in the dark at room temperature (18-25°C).
6. Add 500 μ L FACS buffer to the tube. Mix well and centrifuge at 300g for 5 minutes at room temperature (18-25°C). Aspirate supernatant completely.
7. Repeat step 6 twice.
8. Add a suitable amount of FACS buffer to resuspend cell and analysis by flow cytometry.

(Optional) For Cell Sample

1. Harvest the cells and wash the cells twice by FACS buffer.
2. Count the cells number and the viability.
3. Resuspend the cell suspension to a concentration up to 1×10^6 nucleated cells per 100 μ L of buffer.
4. Add 1 μ L Rabbit Anti-Human 2C6 scFv Monoclonal Antibody, PE, dead cell staining solution and additional fluorochrome. Mix gently and thoroughly.
5. Incubate for 25 minutes in the dark at room temperature (18-25°C).
6. Add 500 μ L FACS buffer to the tube. Mix well and centrifuge at 300 g for 5 minutes at room temperature (18-25°C). Aspirate supernatant completely.
7. Repeat step 6 twice.
8. Add a suitable amount of FACS buffer to resuspend cell and analysis by flow cytometry.

Product Notices

1. Since applications vary, each investigator should titrate the reagent to obtain optimal results.
2. Caution: Antibody solutions containing ProClin 300 should be handled with care. Do not take internally and avoid all contact with the skin, mucosa and eyes.

Intellectual Product Notices

1. Conditions: The information disclosed herein is not to be construed as a recommendation to use the above product in violation of any patents. BioSwan will not be held responsible for patent infringement or other violations that may occur with the use of our products. Purchase does not include or carry any right to resell or transfer this product either as a stand-alone product or as a component of another product. Any use of this product other than the permitted use without the express written authorization of BioSwan Company is strictly prohibited. For Research Use Only. Not for use in diagnostic or therapeutic procedures. Not for resales. BioSwan, the BioSwan Logo and all other trademarks are property of BioSwan Laboratories, Co., Ltd.